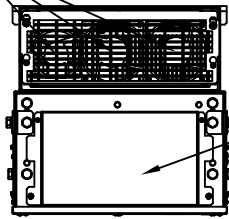
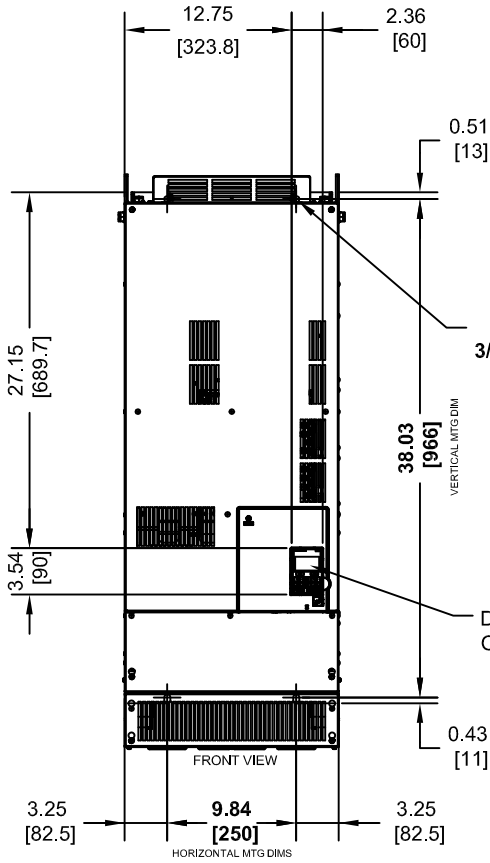


(3) EXTERNAL COOLING FANS



TOP PROTECTIVE COVER

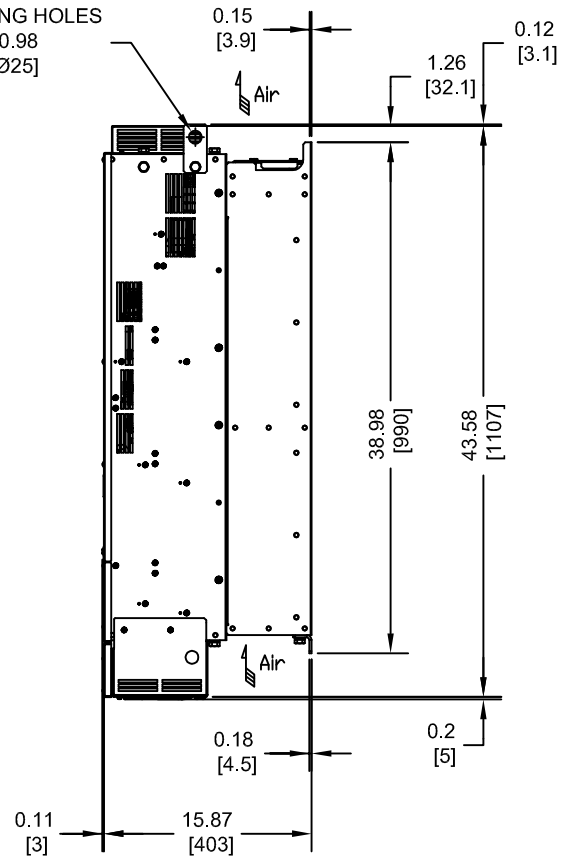
NOTE:  
SPREADER BAR REQUIRED TO AVOID DAMAGE DURING LIFTING



(4)-LIFTING HOLES  
Ø0.98 [Ø25]

(4)-MOUNTING HOLES FOR 3/8" [M10] SCREWS

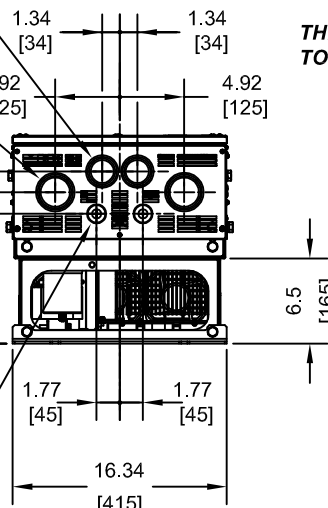
DIGITAL OPERATOR



(2) - Ø1.97 [50] HOLE WITH RUBBER BUSHING

(2) - Ø2.44 [62] HOLE WITH RUBBER BUSHING

(2) - Ø1.10 [28] HOLE WITH RUBBER BUSHING



THE DIMENSIONS SHOWN ARE FOR AN IP00 OPEN TYPE DRIVE THAT HAS BEEN CONVERTED TO A NEMA TYPE 1 DRIVE BY ADDING THE PARTS FROM NEMA 1 KIT PART NUMBER EZZ022745D

MODEL # CIMR-ZU	VOLTAGE 3-PHASE (VAC)	OUTPUT CURRENT (A)	WEIGHT LBS (Kg)	WEIGHT WITHOUT EMC FILTER LBS (Kg)	HEAT LOSS (W) (Fc=4kHz)		
					INT	EXT	TOT
2□0154□□□	200/240	154	260 (118)	249 (113)	366	2441	2807
2□0192□□□		192	260 (118)	249 (113)	447	3064	3511
4□0156□□□	380/480*	156	260 (118)	249 (113)	421	2857	3278
4□0180□□□		180	260 (118)	249 (113)	482	3316	3798

NOTES:

□ DENOTES A-Z

□□ DENOTES AAA-ZZZ

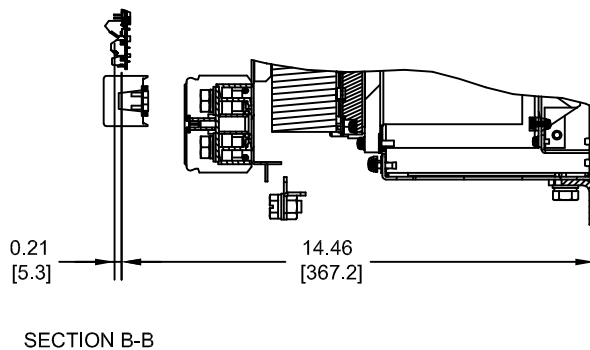
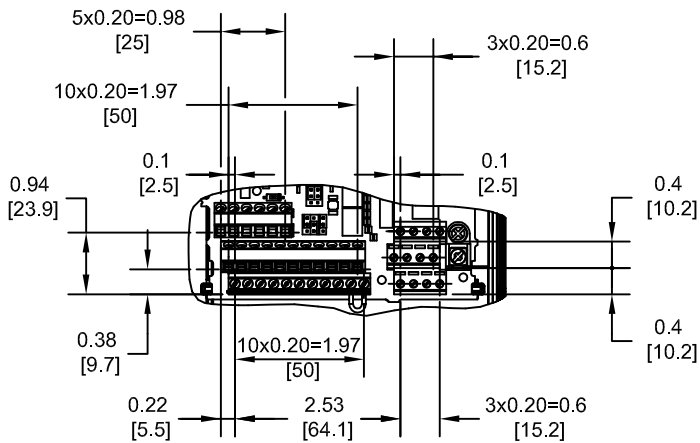
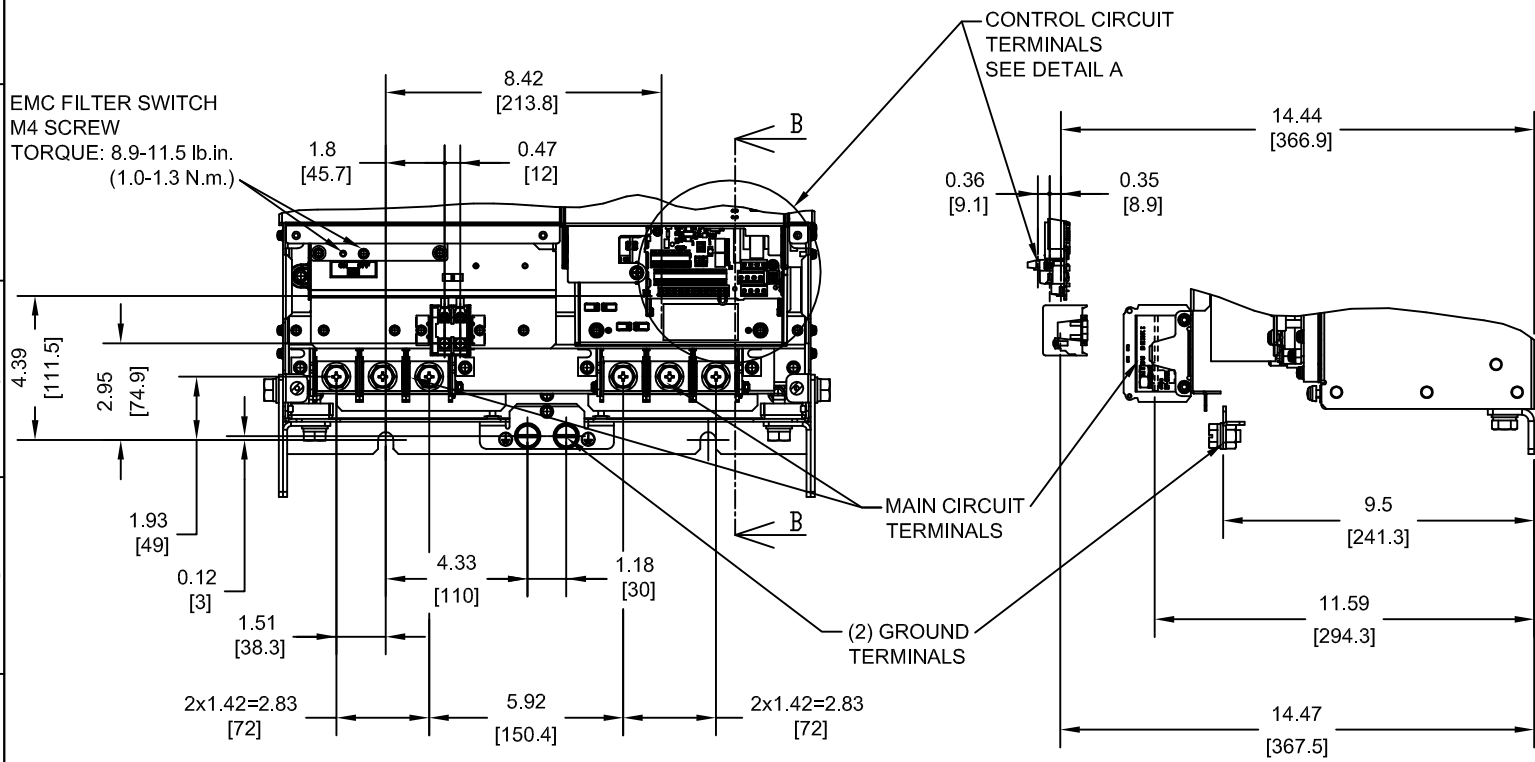
\* - FOR MODELS WITHOUT INTEGRAL EMC FILTER, VOLTAGE RATING IS 380/500.

INT=INTERNAL COMPONENTS  
EXT=EXTERNAL HEATSINK  
TOT=TOTAL

FOR ADDITIONAL DETAILS AND SPECIFICATIONS, CONSULT MANUAL

TOLERANCES / REFERENCES:			DRAWN: J. MATTAS DATE: 3-17-15	TITLE: Z1000U DIMENSION DRAWING FRAME SIZE 4 NEMA TYPE 1 ENCLOSURE
UNITS: IN[mm]	SCALE: 1:15		CHECKED: J. PIOTROWSKI DATE: 3-18-15	DATE: 3-19-15
THIS DOCUMENT AND INFORMATION CONTAINED IN IT ARE CONFIDENTIAL, AND CANNOT BE COPIED OR DISCLOSED IN WHOLE OR IN PART WITHOUT THE EXPRESS WRITTEN CONSENT OF YASKAWA AMERICA, INC.		TECH: J. BORJA DATE: 3-19-15	DATE: 4-30-15	DRAWING #: DD.Z1KU.FR4.N1
		APPROVED: J. CAIRO	ORIGINAL DESIGN: -	

TERMINAL AND WIRING DETAILS (SCALE 1:6)



DETAIL A (SCALE 1:3)  
CONTROL CIRCUIT TERMINALS

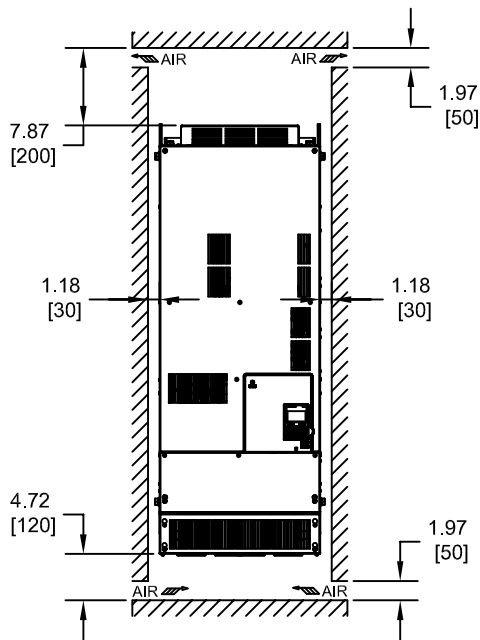
TERMINAL AND WIRE SPECIFICATIONS FOR  
MAIN CIRCUIT AND GROUND

MODEL # CIMR-ZU	TERMINAL SYMBOL	TERMINAL SCREW	CLAMPING TORQUE lb.in.(N.m.)	WIRE RANGE AWG(mm <sup>2</sup> )
2□0154	R/L1, S/L2, T/L3	M10	133 TO 177 (15 TO 20)	10 TO 4/0 (6 TO 95)
2□0192	U/T1, V/T2, W/T3			
4□0156	p1, n1	M4	10.6 TO 17.7 (1.2 TO 2.0)	14 TO 12 (2.5 TO 4)
4□0180	⊕	M10	156 TO 200 (17.7 TO 22.6)	4 TO 2/0 (25 TO 70)

NOTE: REFER TO APPLICABLE CODES FOR PROPER WIRE TYPE AND SIZE

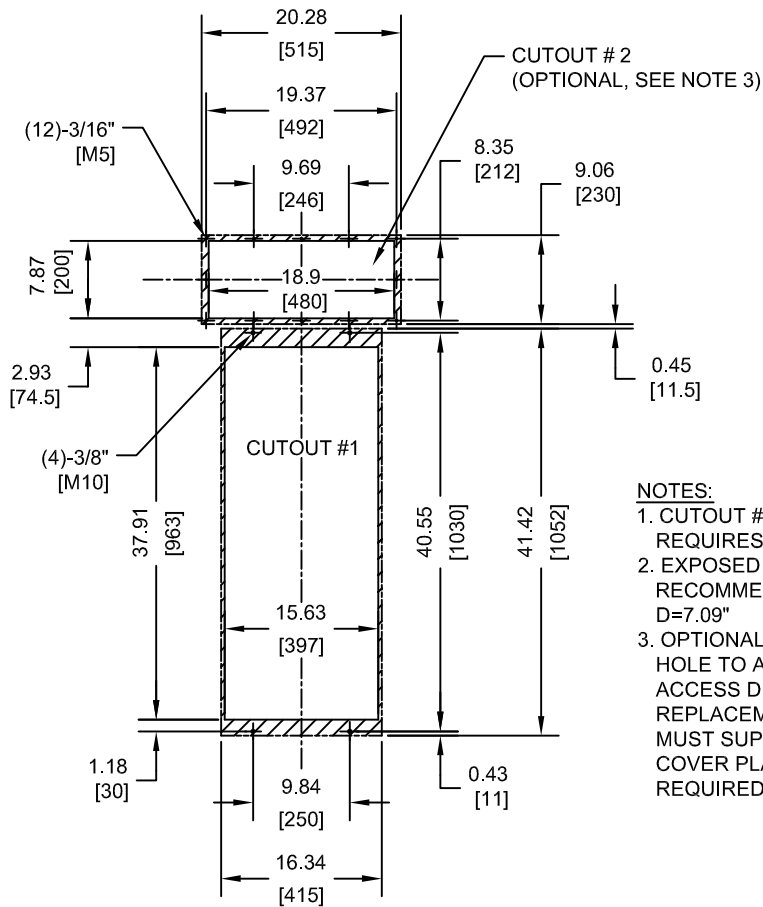
TOLERANCES / REFERENCES:		<p>THIS DOCUMENT AND INFORMATION CONTAINED IN IT ARE CONFIDENTIAL, AND CANNOT BE COPIED OR DISCLOSED IN WHOLE OR IN PART WITHOUT THE EXPRESS WRITTEN CONSENT OF YASKAWA AMERICA, INC.</p>	DRAWN: J. MATTAS	DATE: 3-17-15	TITLE: Z1000U DIMENSION DRAWING FRAME SIZE 4 NEMA TYPE 1 ENCLOSURE 2□0154, 2□0192, 4□0156 AND 4□0180
			CHECKED: J. PIOTROWSKI	DATE: 3-18-15	
			TECH: J. BORJA	DATE: 3-19-15	
			APPROVED: J. CAIRO	DATE: 4-30-15	
UNITS: IN[mm]	SCALE: BY VIEW	ORIGINAL DESIGN:			DRAWING #: DD.Z1KU.FR4.N1
					SIZE: A REVISION: R00 PAGE: 2 of 3

MINIMUM INSTALLATION CLEARANCES (SCALE 1:20)



NOTE:  
FOR SIDE-BY-SIDE MOUNTING  
CONSULT MANUAL

PANEL CUTOUT FOR EXTERNAL HEATSINK  
MOUNTING CONFIGURATION (SCALE 1:20)



- NOTES:
1. CUTOUT #1: EXTERNAL HEATSINK, REQUIRES MOUNTING KIT
  2. EXPOSED HEATSINK RECOMMENDED CLEARANCE D=7.09"
  3. OPTIONAL CUTOUT #2 IS AN ACCESS HOLE TO ALLOW FOR FRONT ACCESS DURING HEATSINK COOLING FAN REPLACEMENT. THE PANEL BUILDER MUST SUPPLY THE APPROPRIATE COVER PLATE AND HARDWARE REQUIRED TO CLOSE THIS OPENING.

FOR ADDITIONAL DETAILS AND SPECIFICATIONS, CONSULT MANUAL

TOLERANCES / REFERENCES:			DRAWN: J. MATTAS CHECKED: J. PIOTROWSKI TECH: J. BORJA APPROVED: J. CAIRO ORIGINAL DESIGN: -	DATE: 3-17-15 DATE: 3-18-15 DATE: 3-19-15 DATE: 4-30-15 DATE: -	TITLE: Z1000U DIMENSION DRAWING FRAME SIZE 4 NEMA TYPE 1 ENCLOSURE 2□0154, 2□0192, 4□0156 AND 4□0180
UNITS: IN[mm]	SCALE: BY VIEW		THIS DOCUMENT AND INFORMATION CONTAINED IN IT ARE CONFIDENTIAL, AND CANNOT BE COPIED OR DISCLOSED IN WHOLE OR IN PART WITHOUT THE EXPRESS WRITTEN CONSENT OF YASKAWA AMERICA, INC.	SIZE: A REVISION: R00 PAGE: 3 of 3	DRAWING #: DD.Z1KU.FR4.N1